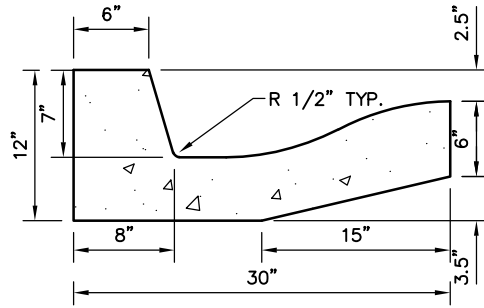


### 30" CURB & GUTTER

0.57 YD.<sup>3</sup>/10 LINEAR FT.

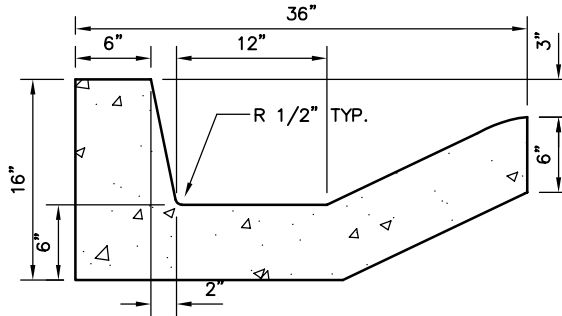
**TYPE A**



### 30" IRRIGATION C&G

0.57 YD.<sup>3</sup>/10 LINEAR FT.

**TYPE B**



### 36" CURB & GUTTER

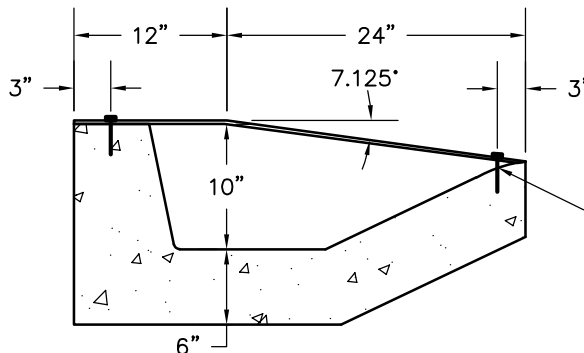
0.81 YD.<sup>3</sup>/10 LINEAR FT.

**TYPE C**

#### NOTE:

ALL CURB AND GUTTER TYPES SHALL HAVE:

1. CONTRACTION JOINTS EVERY 10' O.C. 1/2" DEEP.
2. EXPANSION JOINTS AT THE P.C. AND P.T. OF A STREET INTERSECTION CURB RADIUS RETURN.



1/2" x 4" ANCHOR BOLT (GALVANIZED) w/ 5/8" HOLE (SPACED 2' O/C & ON ALL CORNERS)

### COVERED DRIVE OR SIDEWALK ACCESS RAMP\*

USING 1/2" LARGE PATTERN INLAND 4-WAY PLATE (GALVANIZED PAINTED OR HOT DIPPED) LENGTHS TO BE SAME AS DRIVEWAY OR SIDEWALK WIDTHS

\* USE ONLY WHEN APPROVED BY THE CITY ENGINEER.

SECRET NO.  
**C1**  
FILE: C01

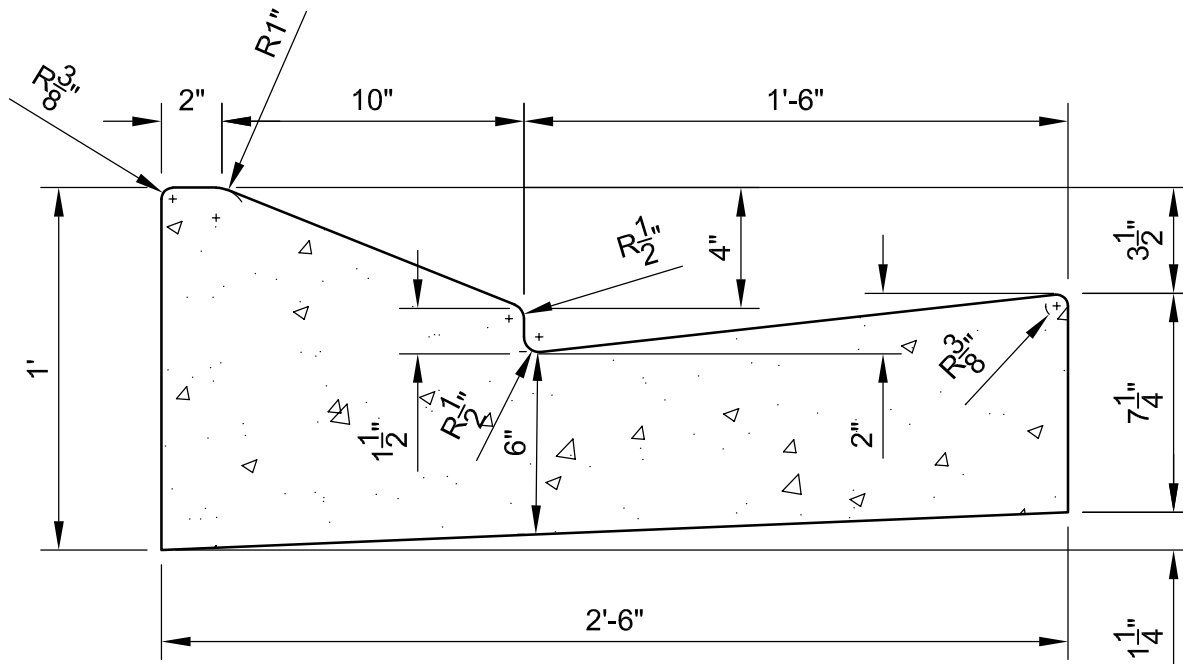
CURB & GUTTER

REVISIONS		
DATE	DESCRIPTION	BY

**CEDAR CITY**  
10 NORTH MAIN STREET  
CEDAR CITY, UTAH 84720  
PH. (435) 586-2963

SCALE: N.T.S.  
DRAWN: T.B.M.

DATE: 7/2021  
CHECKED: J.A.S.



**LOW PROFILE  
30" CURB & GUTTER  
TYPE D**

N.T.S.

**NOTES:**

1. TYPE D CURB AND GUTTER IS ONLY ALLOWED AS AN OPTION ON LOCAL (45' R.O.W.) STREETS IN THE R-1, R-2-1, R-2-2, & R-3-1 RESIDENTIAL ZONES.
2. WHERE SIDEWALKS CROSS DRIVEWAY APPROACHES BEHIND A TYPE D CURB & GUTTER, MINIMUM SIDEWALK THICKNESS SHALL BE 6" THICK REINFORCED WITH #4 BARS @ 16" O.C. BOTH WAYS. SIDEWALKS IN OTHER AREAS SHALL BE A MINIMUM OF 4" THICK..

**NOTE:**

- ALL CURB AND GUTTER TYPES SHALL HAVE:
1. CONSTRUCTION JOINTS EVERY 10' O.C. 1/2" DEEP.
  2. EXPANSION JOINTS AT THE P.C. AND P.T. OF A STREET INTERSECTION CURB RADIUS RETURN.

SHEET NO.

C1A

FILE: C01A

LOW PROFILE  
CURB & GUTTER (TYPE D)

REVISIONS		
DATE	DESCRIPTION	BY
7/2021	DETAIL C1A ADDED TO STANDARDS	J.A.S.

**CEDAR CITY**

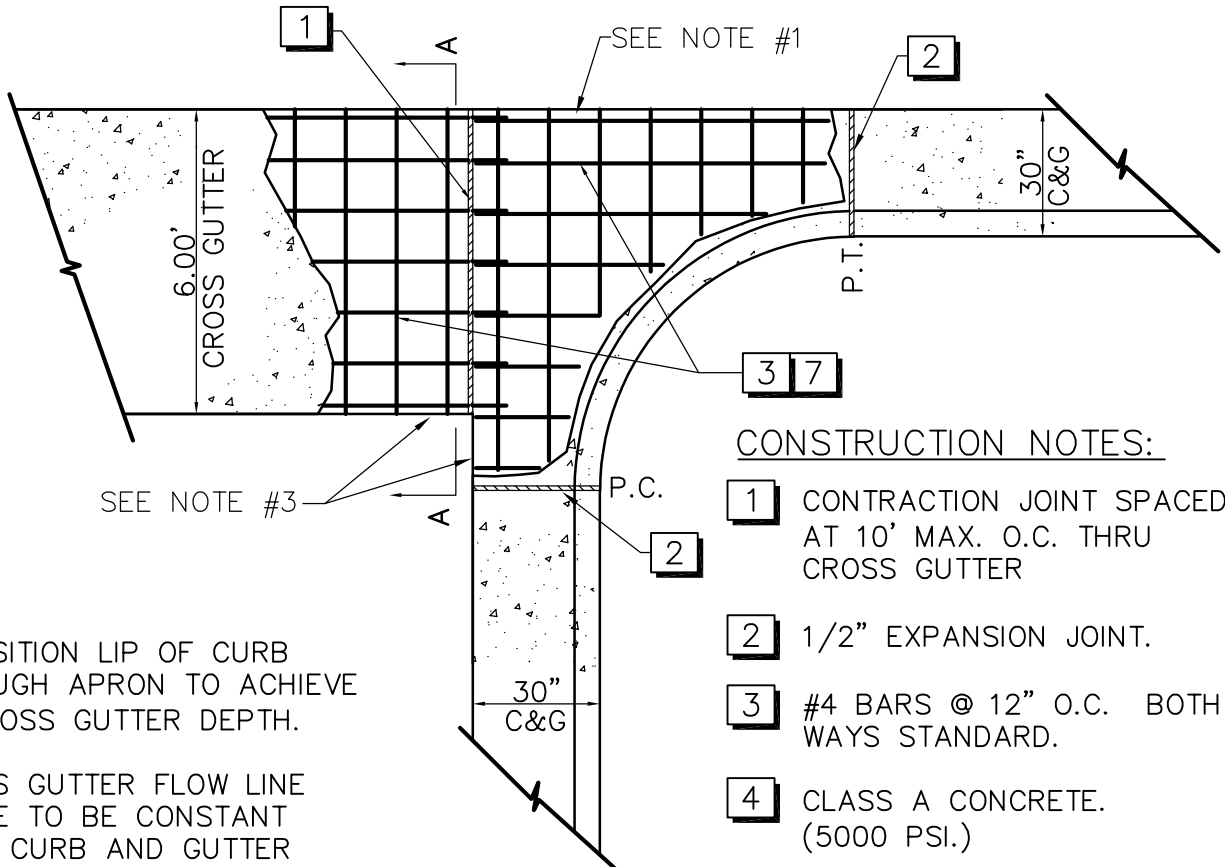
10 NORTH MAIN STREET  
CEDAR CITY, UTAH 84720  
PH. (435) 586-2863

SCALE: N.T.S.

DRAWN: T.B.M.

DATE: 7/2021

CHECKED: J.A.S.



SEE NOTE #3

SEE NOTE #1

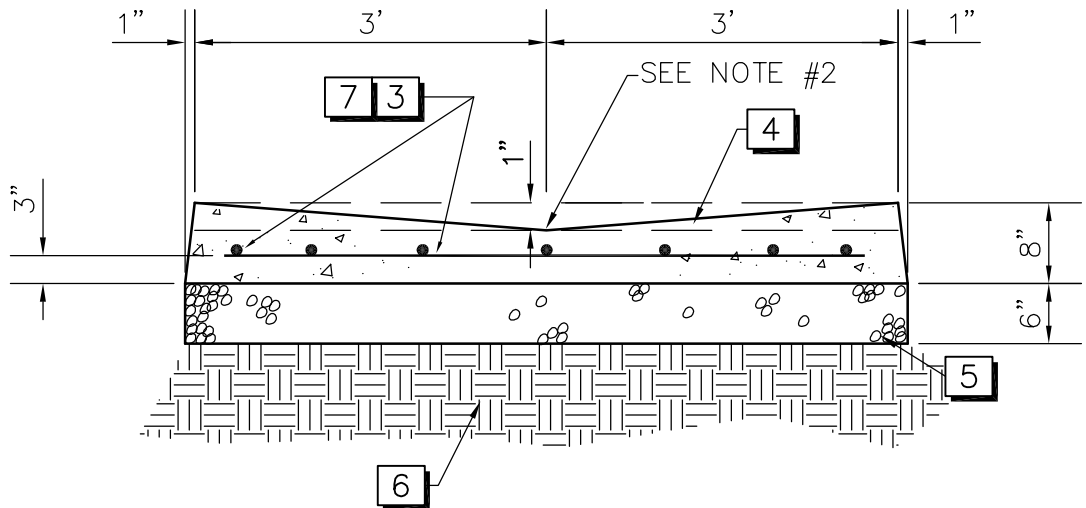
**CONSTRUCTION NOTES:**

- 1** CONTRACTION JOINT SPACED AT 10' MAX. O.C. THRU CROSS GUTTER
- 2** 1/2" EXPANSION JOINT.
- 3** #4 BARS @ 12" O.C. BOTH WAYS STANDARD.
- 4** CLASS A CONCRETE. (5000 PSI.)
- 5** AGGREGATE BASE.
- 6** COMPACTED SUBGRADE.
- 7** REBAR MATS TO BE SUPPORTED ON DOBIE BLOCKS OR REBAR CHAIRS SPACED 4 FEET O.C. EACH WAY.

**NOTES:**

- 1. TRANSITION LIP OF CURB THROUGH APRON TO ACHIEVE 1" CROSS GUTTER DEPTH.
- 2. CROSS GUTTER FLOW LINE GRADE TO BE CONSTANT FROM CURB AND GUTTER ELEVATIONS AT EACH END. MINIMUM CROSS-GUTTER FLOWLINE GRADE IS 0.5% SLOPE.
- 3. ONLY 90° CORNERS WILL BE ALLOWED WHERE ASPHALT CONNECTS TO CROSS GUTTER. CONCRETE APRONS MAY BE REQUIRED.

**PLAN**  
N.T.S.



**SECTION A-A**  
N.T.S.

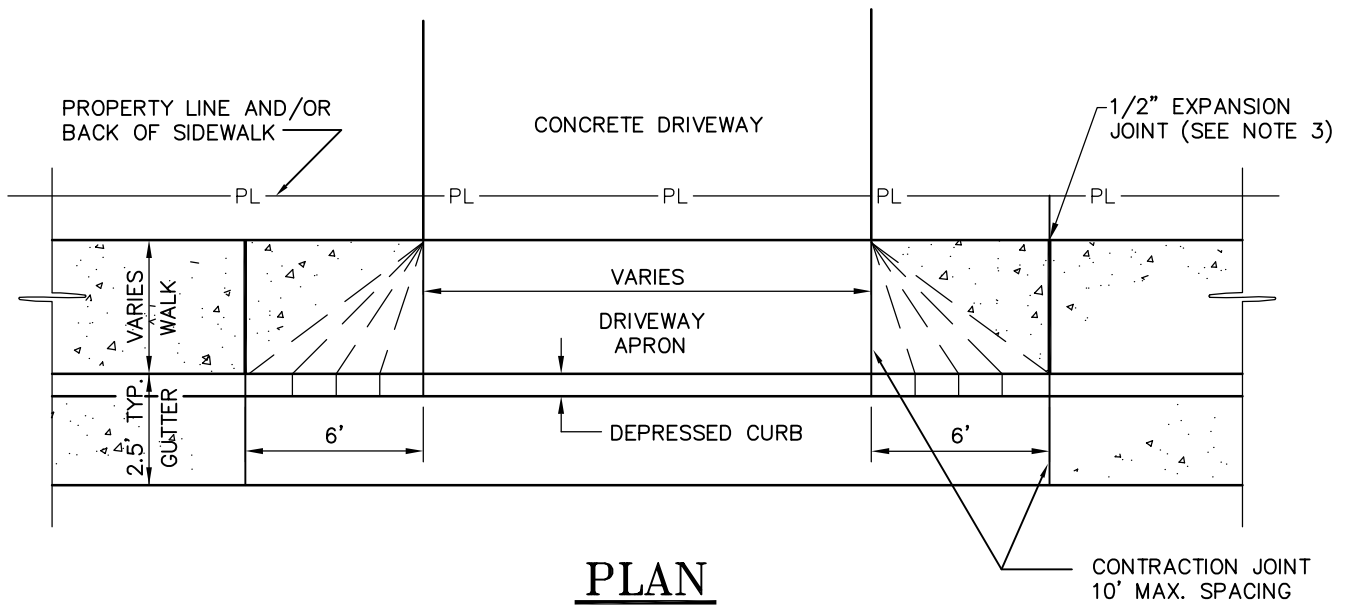
SHEET NO. C2  
FILE: C02

6'-0" CROSS GUTTER

REVISIONS		
DATE	DESCRIPTION	BY
7/2021	ADDED 0.5% MIN. SLOPE, DELETED STEEL CHAIRS	J.A.S.

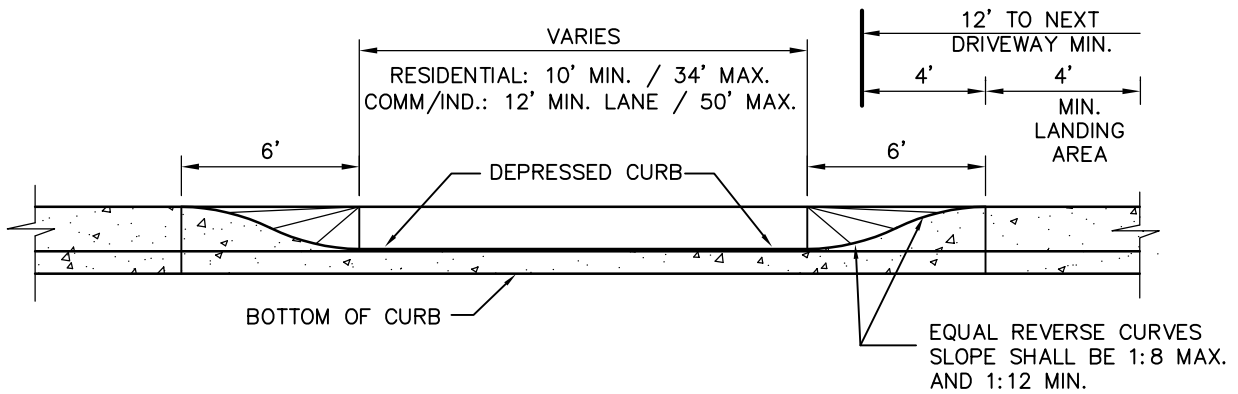
**CEDAR CITY**  
10 NORTH MAIN STREET  
CEDAR CITY, UTAH 84720  
PH. (435) 586-2963

SCALE: N.T.S.	DATE: 7/2021
DRAWN: T.B.M.	CHECKED: J.A.S.



## PLAN

N.T.S.

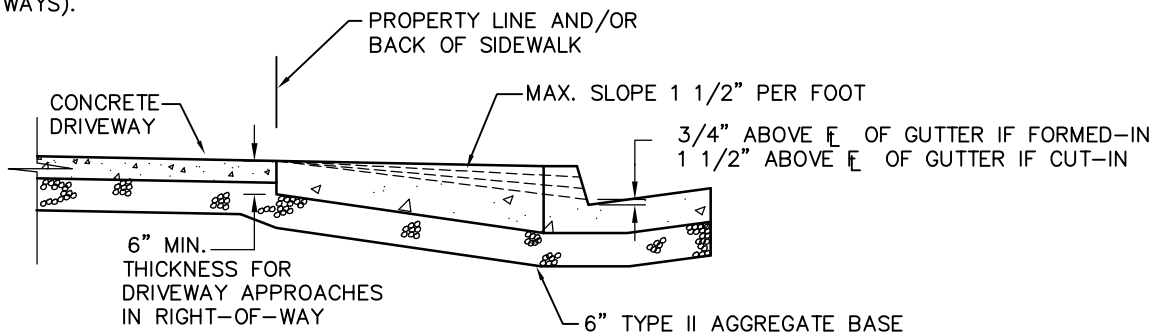


## ELEVATION

N.T.S.

**NOTES:**

1. #4 BARS @ 16" O.C. BOTH WAYS REQ'D.
2. DRIVEWAY CUTS IN EXISTING CURBS SHALL BE SAW CUT TO DIMENSIONS SHOWN, BREAKING-OFF OF CURB BACKS WILL NOT BE PERMITTED.
3. 40' EXPANSION JOINT SPACING IN SIDEWALKS TO CONTINUE THROUGH DRIVEWAYS.
4. ALL CONCRETE TO BE CLASS B (4000 PSI).
5. SIDEWALKS AT DRIVEWAY APPROACHES BEHIND A TYPE D LOW PROFILE CURB MUST BE 6" THICK (REINFORCED WITH #4 BARS @ 16" O.C. BOTH WAYS).



## SECTION

N.T.S.

SHEET NO.  
**C3**

FILE:  
C03

DRIVEWAYS

REVISIONS		
DATE	DESCRIPTION	BY
7/2021	CLARIFIED DRIVEWAY WIDTHS, UPDATED NOTES	J.A.S.

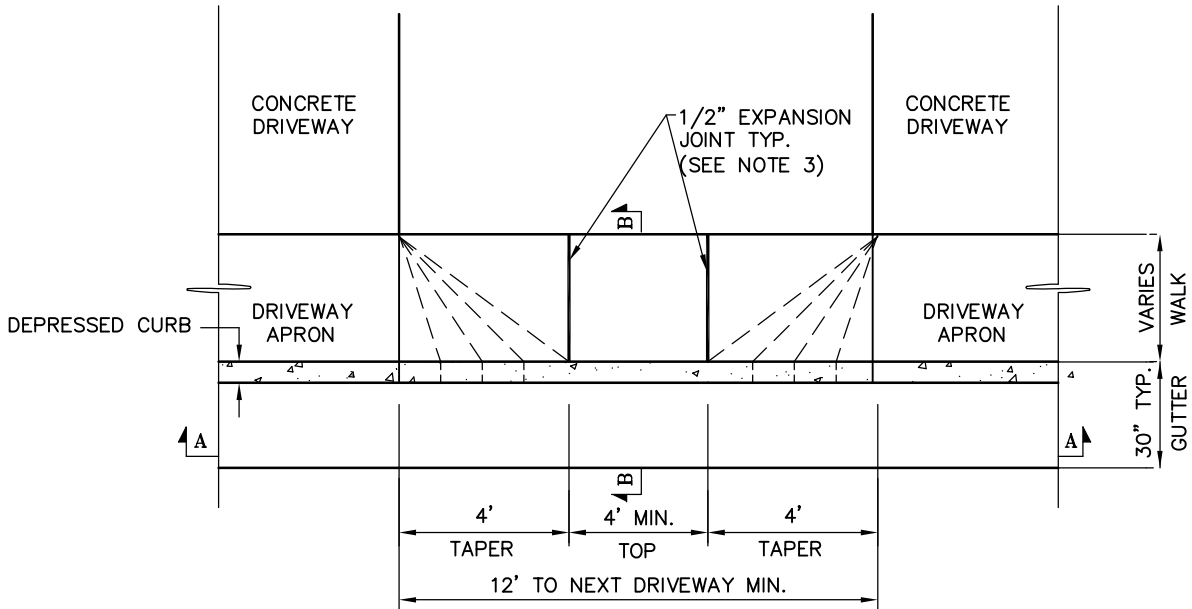
**CEDAR CITY**  
10 NORTH MAIN STREET  
CEDAR CITY, UTAH 84720  
PH. (435) 586-2863

SCALE:  
N.T.S.

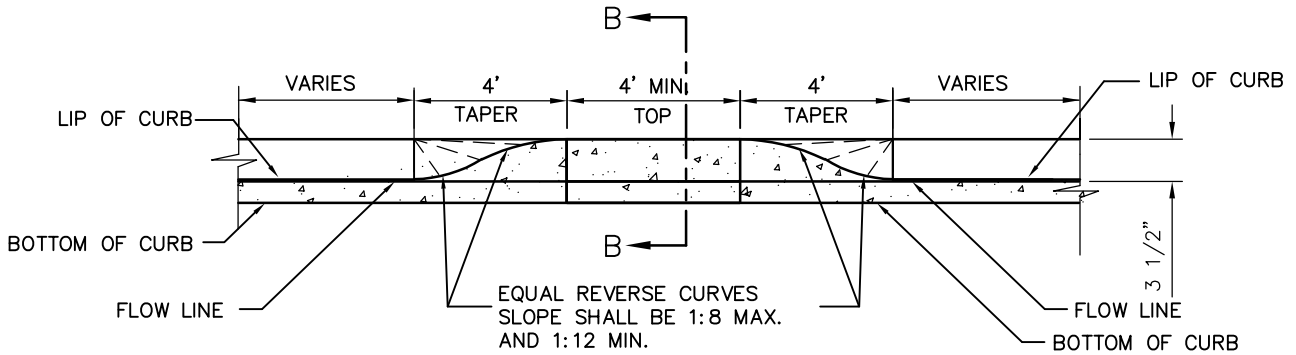
DATE:  
7/2021

DRAWN:  
T.B.M.

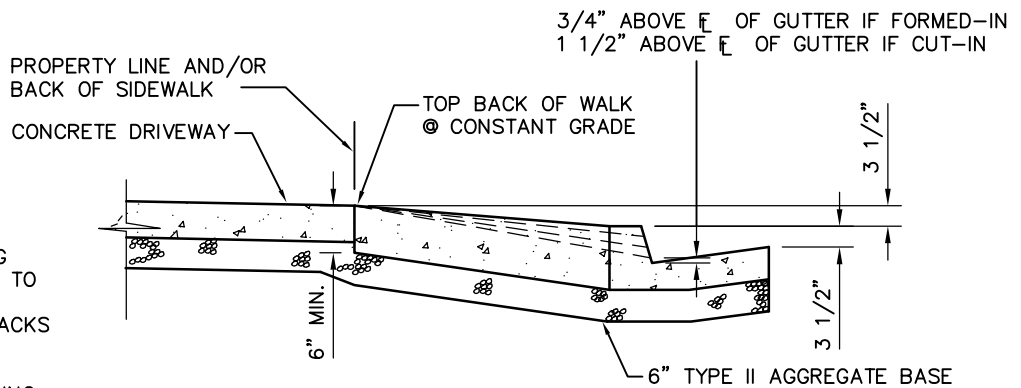
CHECKED:  
J.A.S.



**PLAN**  
N.T.S.



**SECTION A-A**  
N.T.S.



**SECTION B-B**  
N.T.S.

**NOTES:**

- 1- #4 BARS @ 16" O.C. BOTH WAYS REQ'D.
- 2- DRIVEWAY CUTS IN EXISTING CURBS SHALL BE SAW CUT TO DIMENSIONS SHOWN, BREAKING-OFF OF CURB BACKS WILL NOT BE PERMITTED.
- 3- 40' EXPANSION JOINT SPACING IN SIDEWALKS TO CONTINUE THROUGH DRIVEWAYS.
- 4- ALL CONCRETE TO BE CLASS B (4000 PSI).

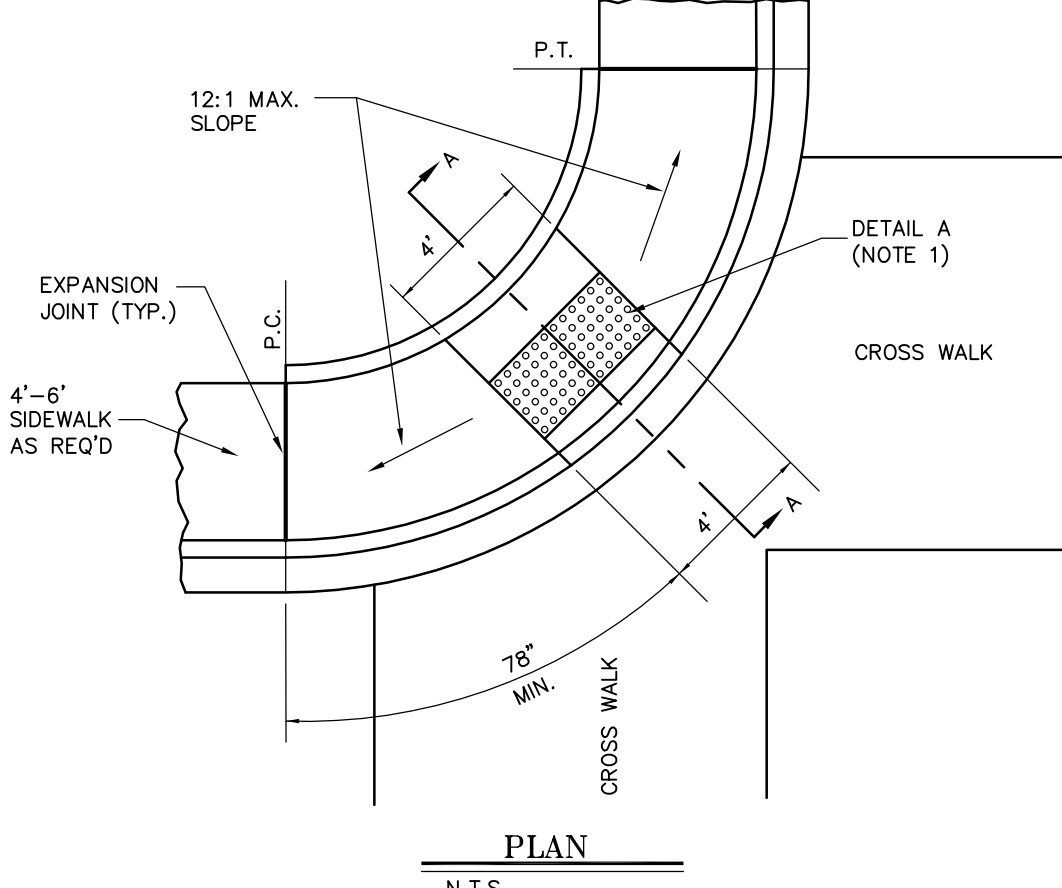
SHEET NO.  
**C4**  
FILE: C04

COMMERCIAL/INDUSTRIAL/RESIDENTIAL  
& PUD'S DRIVEWAY BREAKS

REVISIONS		DATE	DESCRIPTION	BY
7/2021	UPDATED TAPER & TOP WIDTHS	UPDATED NOTES	J.A.S.	

**CEDAR CITY**  
10 NORTH MAIN STREET  
CEDAR CITY, UTAH 84720  
PH. (435) 586-2963

SCALE: N.T.S.	DATE: 7/2021
DRAWN: T.B.M.	CHECKED: J.A.S.

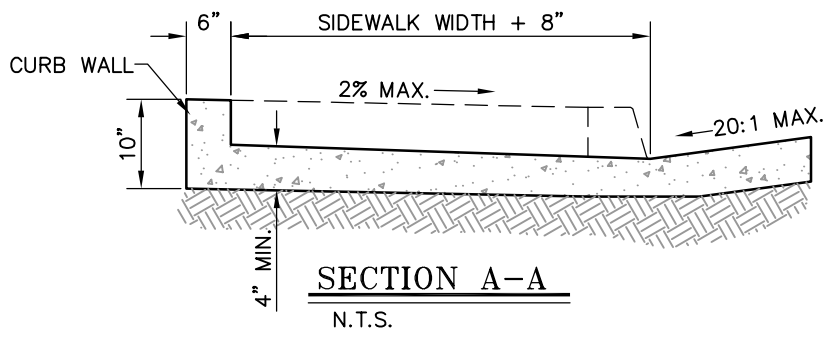


**PLAN**

N.T.S.

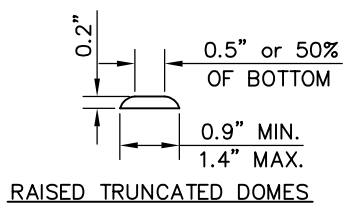
**NOTES:**

1. DETECTABLE WARNING CAST-IN-PLACE SYSTEM WITH TRUNCATED DOMES BY AMOR-TILE O.A.E. 24" x 48" SIZE, BRICK RED COLOR O.A.E.
2. WHEELCHAIR RAMPS SHALL BE LOCATED AT THE MIDPOINT OF CURB RADIUS UNLESS OTHERWISE INDICATED ON PLAN.
3. RAMPS SHALL BE CONSTRUCTED WITH A ROUGH BROOM FINISH TRANSVERSE TO THE SLOPE.
4. ALL CONCRETE TO BE CLASS B (4000 PSI).
5. BACK OF WALK AND CURB WALL TO BE 1 INCH ABOVE TOP BACK OF CURB AT P.C. AND P.T.
6. UDOT STANDARD DRAWING PA 1 (LATEST VERSION) CAN BE SUBSTITUTED FOR THIS DETAIL. BRICK RED COLOR TILE IS STILL REQUIRED.

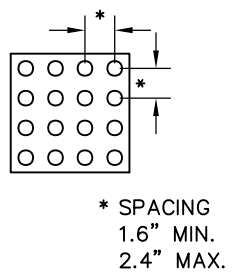


**SECTION A-A**

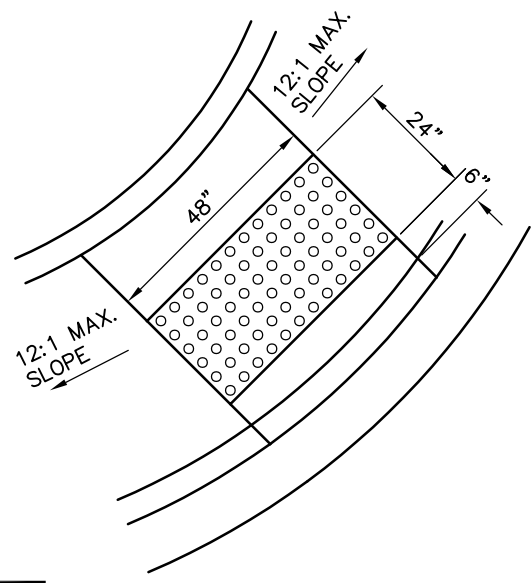
N.T.S.



**RAISED TRUNCATED DOMES**



\* SPACING  
1.6" MIN.  
2.4" MAX.



**DETAIL A**

N.T.S.

SHEET NO.  
**C5**  
FILE: C05

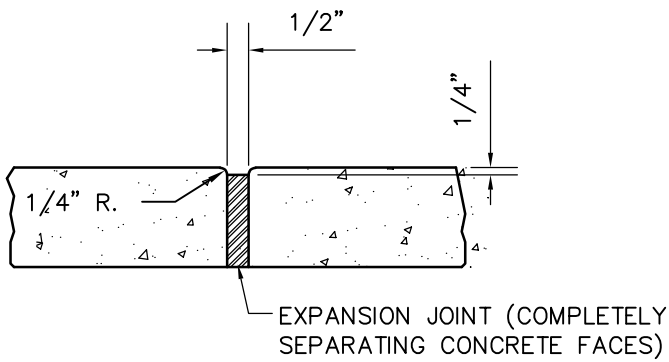
**ACCESSIBLE RAMP**

REVISIONS		
DATE	DESCRIPTION	BY
7/2021	NOTE 6 ADDED, UPDATED NOTES	J.A.S.

**CEDAR CITY**  
10 NORTH MAIN STREET  
CEDAR CITY, UTAH 84720  
PH. (435) 586-2963

SCALE: N.T.S.  
DRAWN: T.B.M.

DATE: 7/2021  
CHECKED: J.A.S.

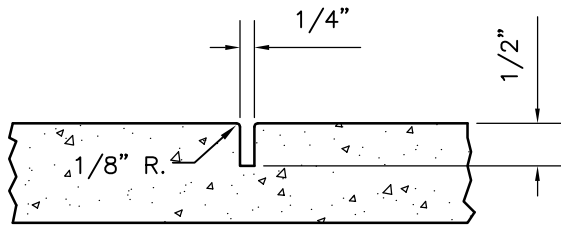


**EXPANSION JOINT**

N.T.S.

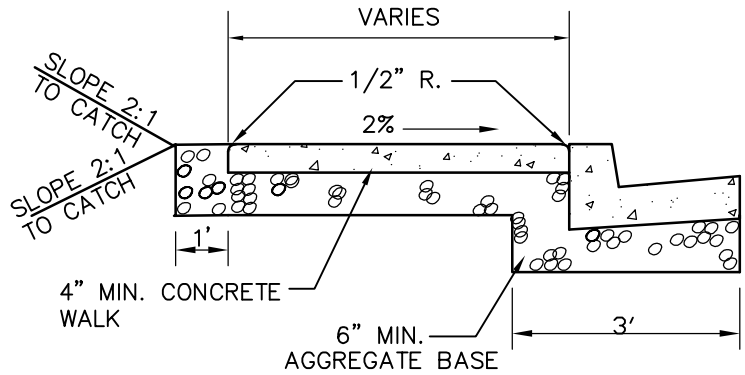
**NOTE:**

1. ON ALL CURB RETURNS EXPANSION JOINTS SHALL BE PLACED AT P.C. AND P.T. OF THE SIDEWALK.
2. ANY REPLACED SECTIONS OF SIDEWALK SHALL HAVE AN EXPANSION JOINT INSTALLED TO MAINTAIN THE 40' MAX. SPACING.
3. PROVIDE 5'x5' PASSING SPACES AT 200' MAX. INTERVALS WHERE SIDEWALK WIDTH IS LESS THAN 5'. DRIVEWAYS & OTHER PAVED AREAS MAY BE USED AS A PASSING SPACE WHERE A MINIMUM 5' WIDE AREA IS PROVIDED, & 2% CROSS-SLOPE REQUIREMENT IS MET.
4. THE 5'x5' PASSING SPACE IS REQUIRED IN ALL ZONES WHERE SIDEWALK IS LOCATED.
5. WHERE SIDEWALKS CROSS DRIVEWAY APPROACHES BEHIND A TYPE D CURB & GUTTER, MINIMUM SIDEWALK THICKNESS SHALL BE 6" THICK REINFORCED WITH #4 BARS @ 16" O.C. BOTH WAYS.



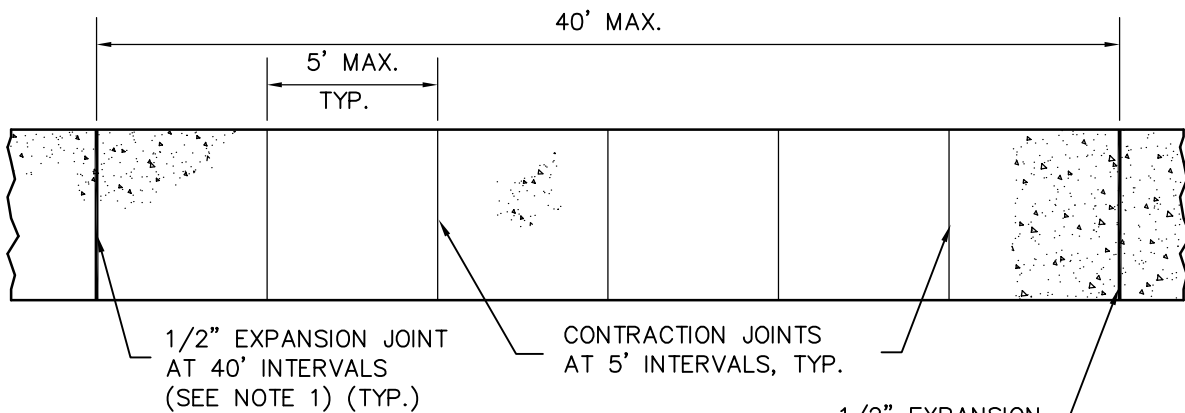
**CONTRACTION JOINT**

N.T.S.



**TYPICAL SECTION**

N.T.S.



**PLAN**

N.T.S.

1/2" EXPANSION JOINT AT 40' INTERVALS (SEE NOTE 1) (TYP.)

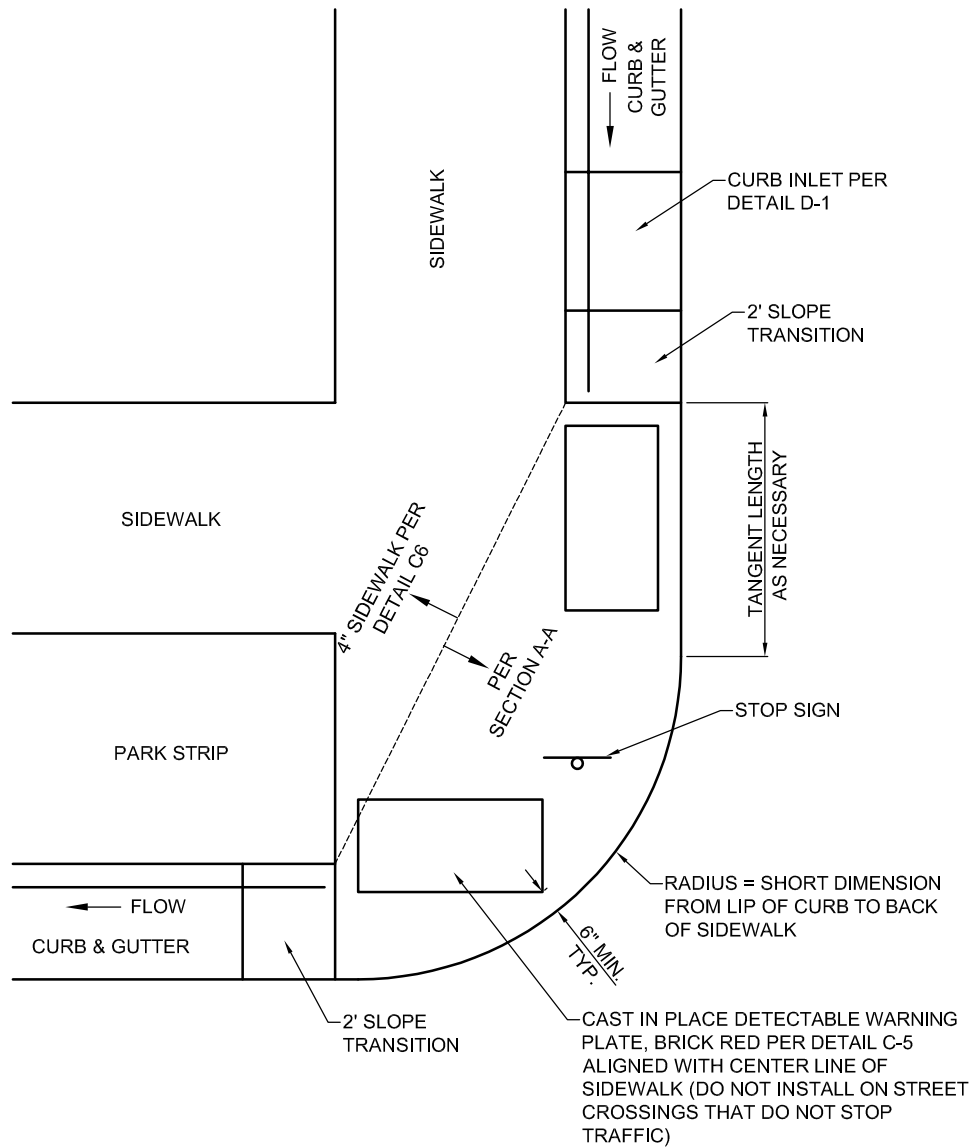
SHEET NO. <b>C6</b>
FILE: C06

<b>CONCRETE SIDEWALK</b>
--------------------------

REVISIONS		
DATE	DESCRIPTION	BY
7/2021	NOTES 3 AND 4 ADDED	J.A.S.

<b>CEDAR CITY</b> 10 NORTH MAIN STREET CEDAR CITY, UTAH 84720 PH. (435) 566-2963
---

SCALE: N.T.S.	DATE: 7/2021
DRAWN: T.B.M.	CHECKED: J.A.S.

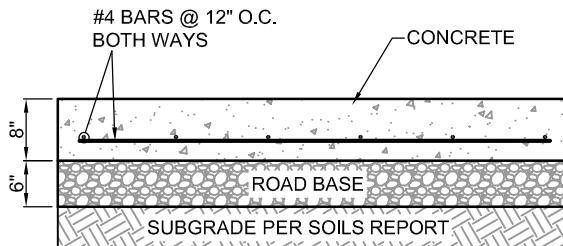


**PLAN VIEW**

N.T.S.

**NOTES:**

1. FALSE RADIUS ONLY ALLOWED WHERE APPROVED BY CITY ENGINEER.
2. CURB & GUTTER TO FLOW AWAY FROM FALSE RADIUS UNLESS STORM WATER FLOW IS ROUTED INTO A STORM DRAIN VIA A CURB INLET BOX AS SHOWN.
3. FALSE RADIUS TO BE ADAPTED TO CONDITION IN FIELD AS APPROVED BY CITY ENGINEER.



**SECTION A-A**

N.T.S.

SHEET NO.

C7

FILE: C07

FALSE RADIUS DETAIL

REVISIONS		
DATE	DESCRIPTION	BY

**CEDAR CITY**  
 10 NORTH MAIN STREET  
 CEDAR CITY, UTAH 84720  
 PH. (435) 586-2983

SCALE: N.T.S.

DATE: 7/2021

DRAWN: T.B.M.

CHECKED: J.A.S.